

West Hills Plaza

20700 Ventura Blvd | Woodland Hills | California



LEE & ASSOCIATES
COMMERCIAL REAL ESTATE SERVICES
AVAILABLE
818.223-4388
JAY RUBIN
SCOTT ROMICK

BLOOMFIRM
REAL ESTATE GROUP
salonrepublic

JAY RUBIN | jrubin@lee-re.com
Principal | JayRubin-RE.com
818.223.4385 | License ID# 01320005

SCOTT ROMICK | sromick@lee-re.com
Principal | License ID# 01323527
818.933.0305

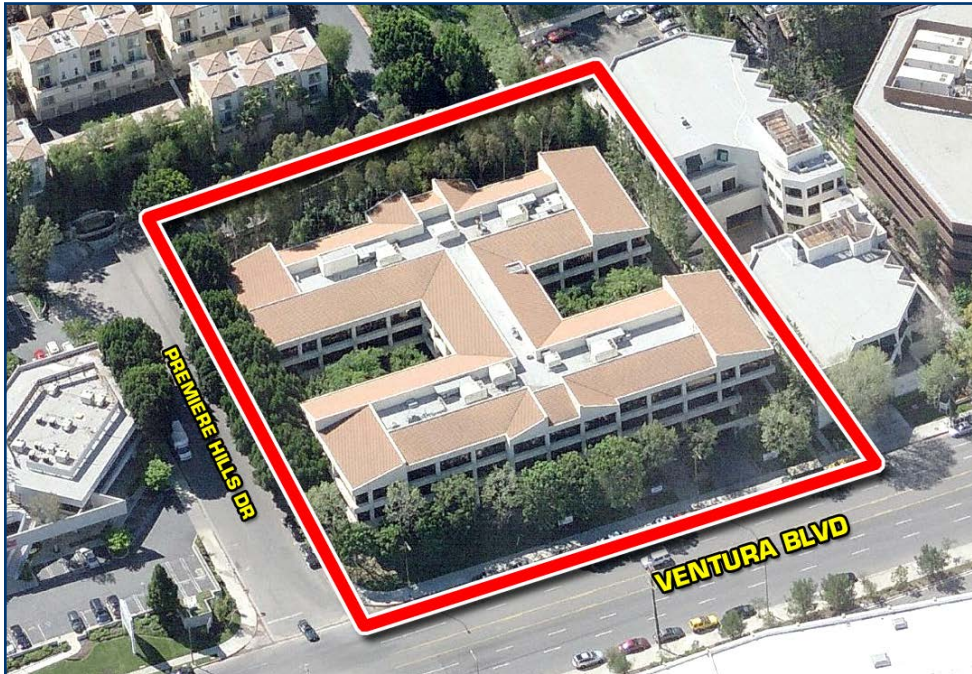
EUGENE KIM | ekim@lee-re.com
Principal | License ID# 01521416
818.444.4919

DARREN CASAMASSIMA | dc@lee-re.com
Principal | License ID# 01425638
818.933.0303

LEE & ASSOCIATES
COMMERCIAL REAL ESTATE SERVICES

Lee & Associates® - LA North/Ventura, Inc. • Corporate ID #01191898
A Member of the Lee & Associates® Group of Companies
5707 Corsa Ave, Suite 200, Westlake Village, CA 91362
P:818.223.4388 F:818.591.1450

Office Space Available For Lease | 20700 Ventura Blvd | Woodland Hills



PROPERTY DETAILS

ADDRESS	20700 Ventura Blvd, Woodland Hills, CA 91364		
AVAILABILITY	Suite 140:	3,041 RSF	
	Suite 200:	896 RSF	
	Suite 203:	1,723 RSF	
	Suite 215:	1,868 RSF	
	Suite 220:	2,191 RSF	
	Suite 222:	4,613 RSF	
	Suite 225:	1,717 RSF	
	Suite 229:	1,219 RSF	
	Suite 231:	1,349 RSF	
	Suite 300:	6,627 RSF	
	Suite 302:	5,488 RSF*	
	Suite 320:	4,050 RSF*	
	Suite 327:	3,488 RSF	
	Suite 328:	1,515 RSF	
	Suite 350:	1,529 RSF	
	Suites 302 & 320 are contiguous for 9,538 RSF*		
RENTAL RATE	\$2.00 Full Service Gross		
TERM	3-10 Years		
PARKING	3/1,000 RSF Tandem Reserved: \$80 per car/month Single Reserved: \$110 per car/month		

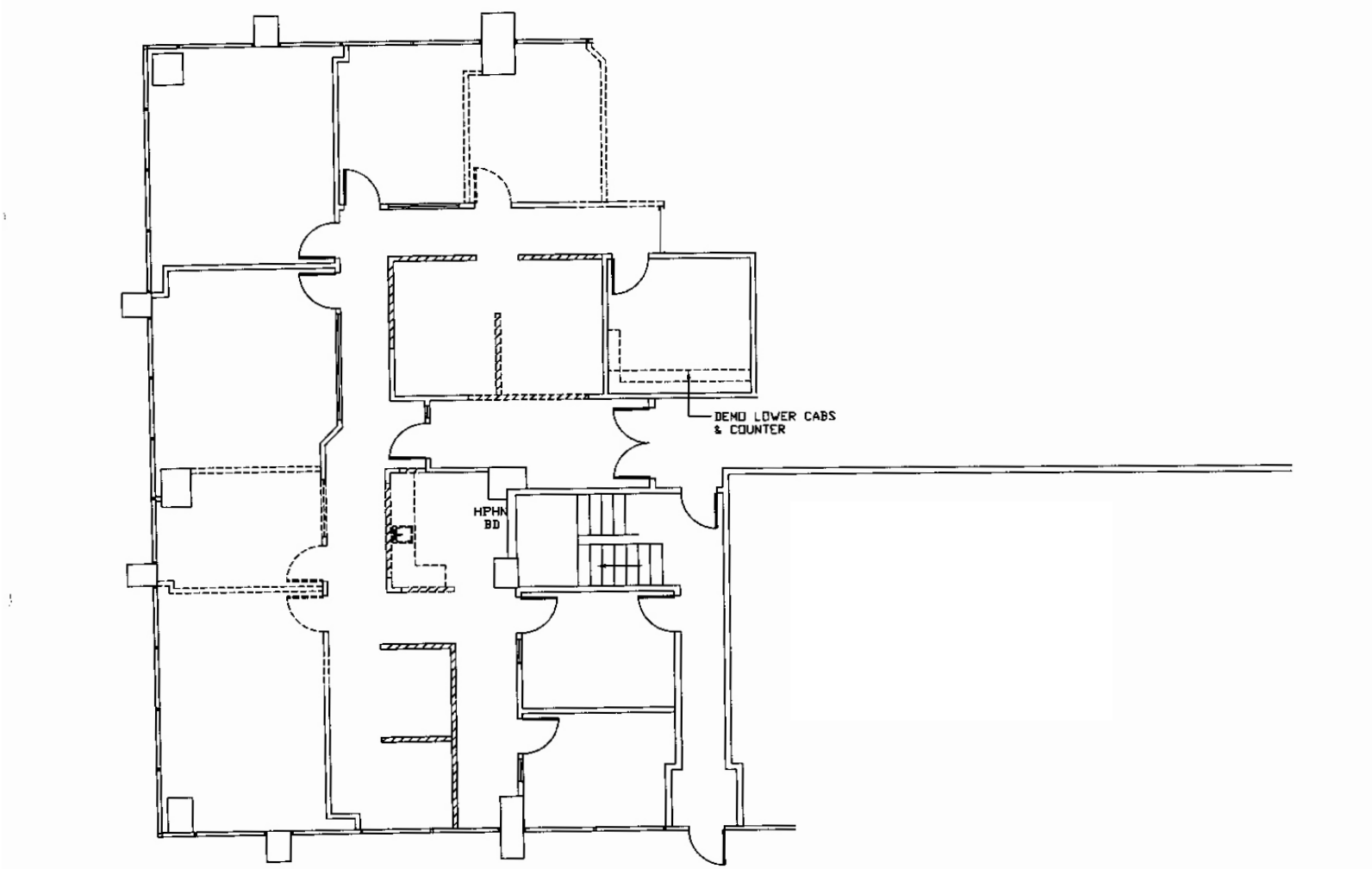
PROPERTY HIGHLIGHTS

- HIGHLY EFFICIENT OFFICE SUITES
- GENEROUS WINDOW LINES
- ON-SITE CAFE AND SALON REPUBLIC
- EASY ACCESS TO 101 FREEWAY

No warranty or representation is made to the accuracy of the foregoing information. Terms of sale or lease and availability are subject to change or withdrawal without notice.

Office Space Available For Lease | 20700 Ventura Blvd | Woodland Hills

Floorplan: Suite 140 - 3,041 RSF



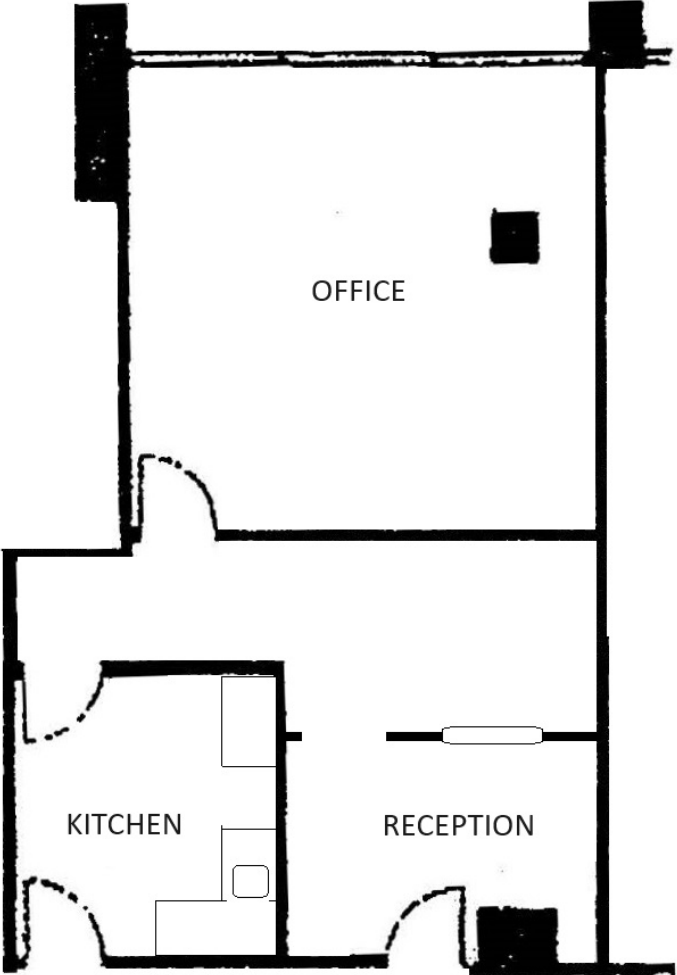
*Not to scale



Lee & Associates® - LA North/Ventura, Inc. • Corporate ID #01191898
A Member of the Lee & Associates® Group of Companies
5707 Corsa Ave, Suite 200, Westlake Village, CA 91362
P:818.223.4388 F:818.591.1450

Office Space Available For Lease | 20700 Ventura Blvd | Woodland Hills

Floorplan: Suite 200 - 879 RSF



*Not to scale

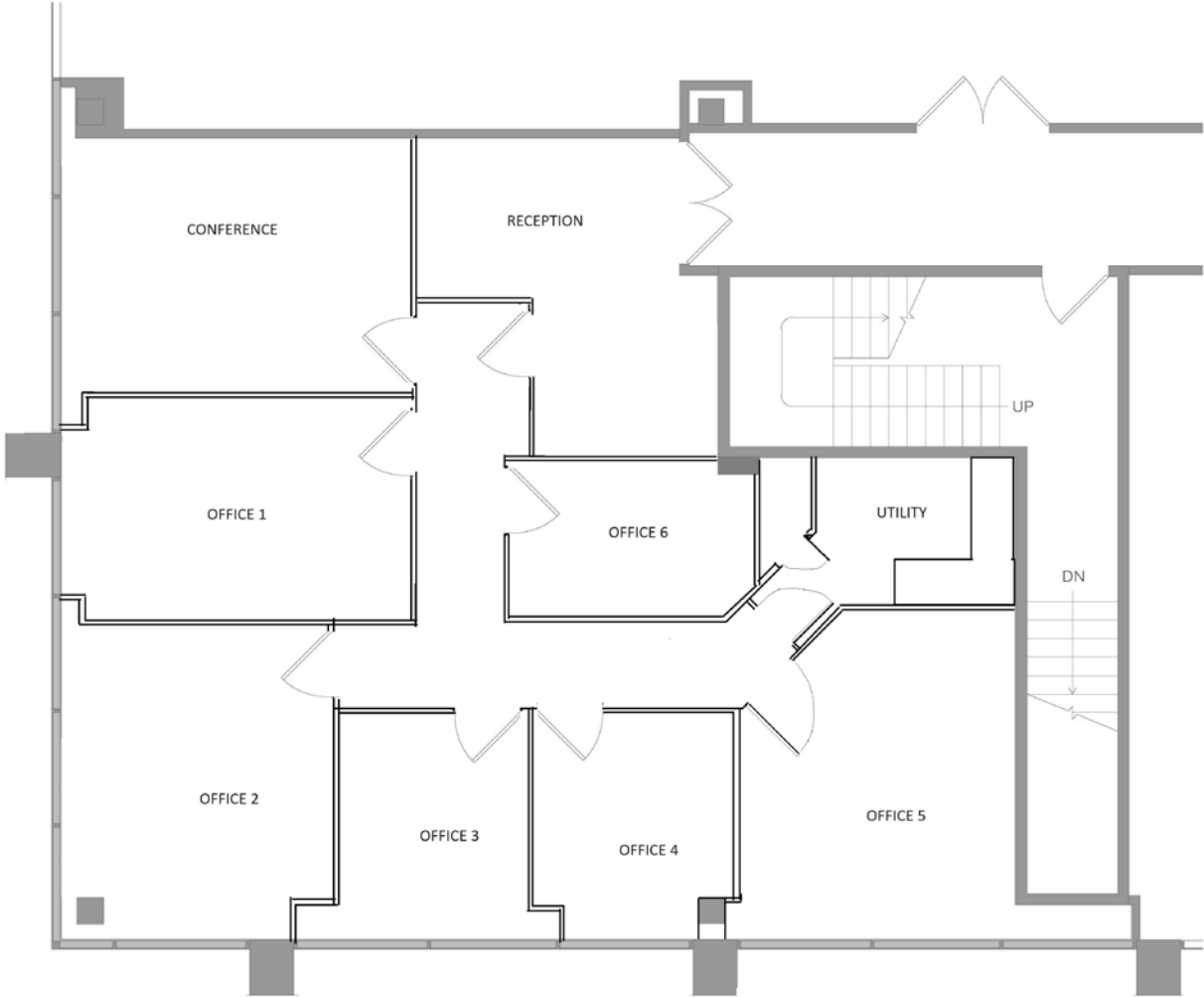


Lee & Associates® - LA North/Ventura, Inc. • Corporate ID #01191898
A Member of the Lee & Associates® Group of Companies
5707 Corsa Ave, Suite 200, Westlake Village, CA 91362
P:818.223.4388 F:818.591.1450

No warranty or representation is made to the accuracy of the foregoing information. Terms of sale or lease and availability are subject to change or withdrawal without notice.

Office Space Available For Lease | 20700 Ventura Blvd | Woodland Hills

Floorplan: Suite 203 - 1,723 RSF



*Not to scale

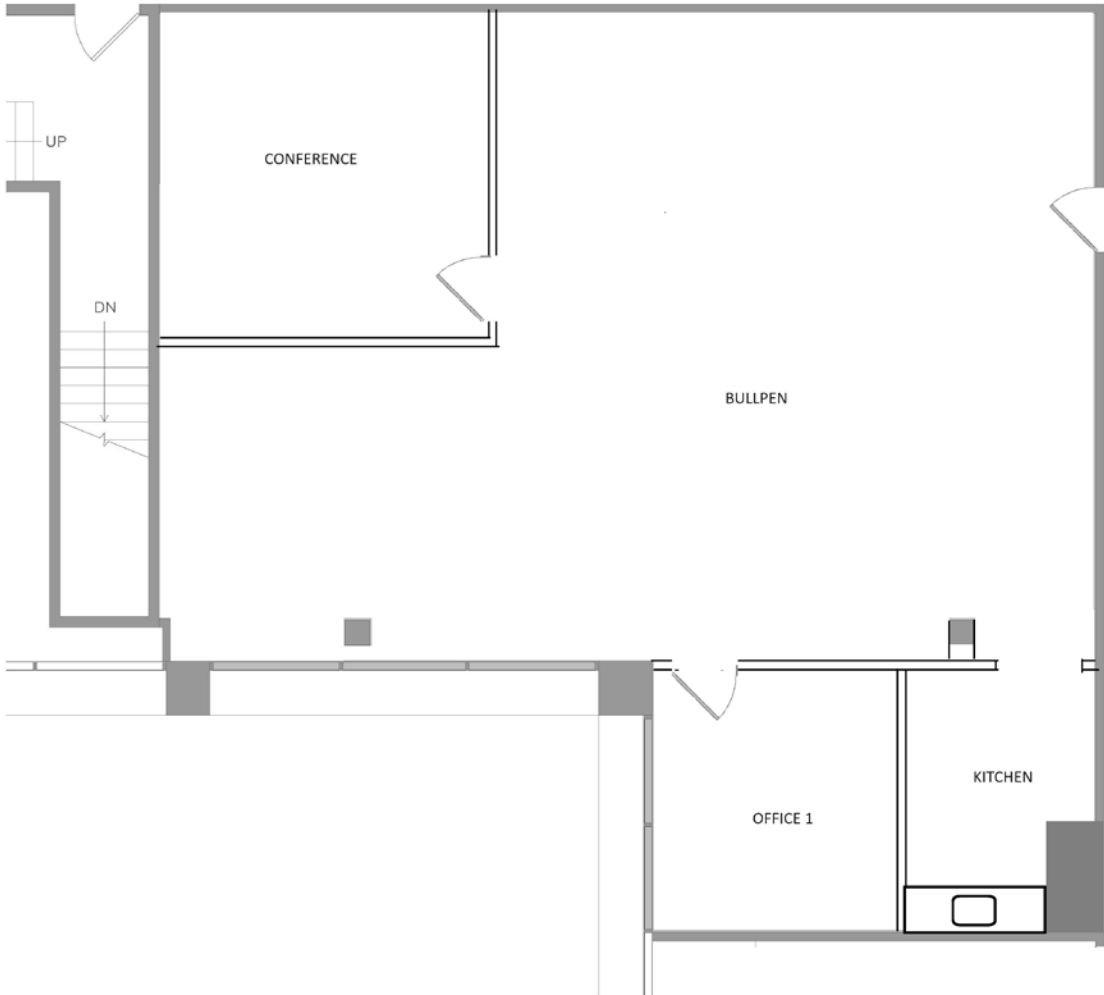


Lee & Associates® - LA North/Ventura, Inc. • Corporate ID #01191898
A Member of the Lee & Associates® Group of Companies
5707 Corsa Ave, Suite 200, Westlake Village, CA 91362
P:818.223.4388 F:818.591.1450

No warranty or representation is made to the accuracy of the foregoing information. Terms of sale or lease and availability are subject to change or withdrawal without notice.

Office Space Available For Lease | 20700 Ventura Blvd | Woodland Hills

Floorplan: Suite 215 - 1,868 RSF



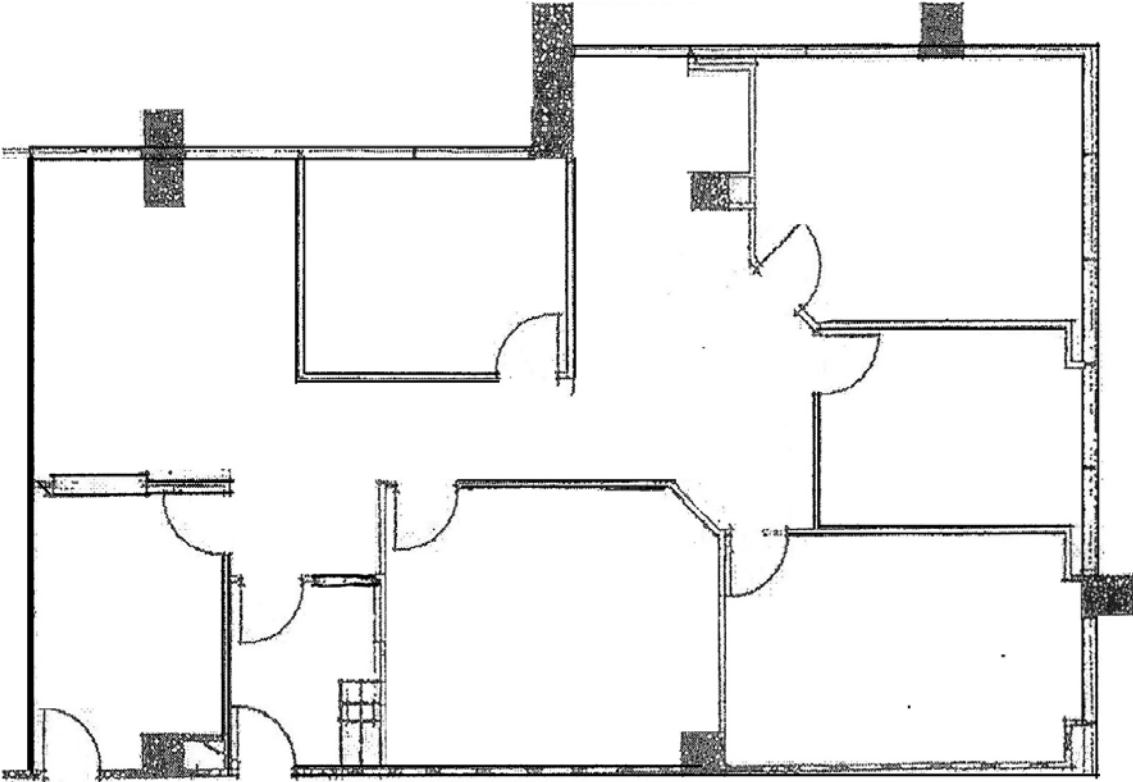
*Not to scale



Lee & Associates® - LA North/Ventura, Inc. • Corporate ID #01191898
A Member of the Lee & Associates® Group of Companies
5707 Corsa Ave, Suite 200, Westlake Village, CA 91362
P:818.223.4388 F:818.591.1450

Office Space Available For Lease | 20700 Ventura Blvd | Woodland Hills

Floorplan: Suite 220 - 2,191 RSF



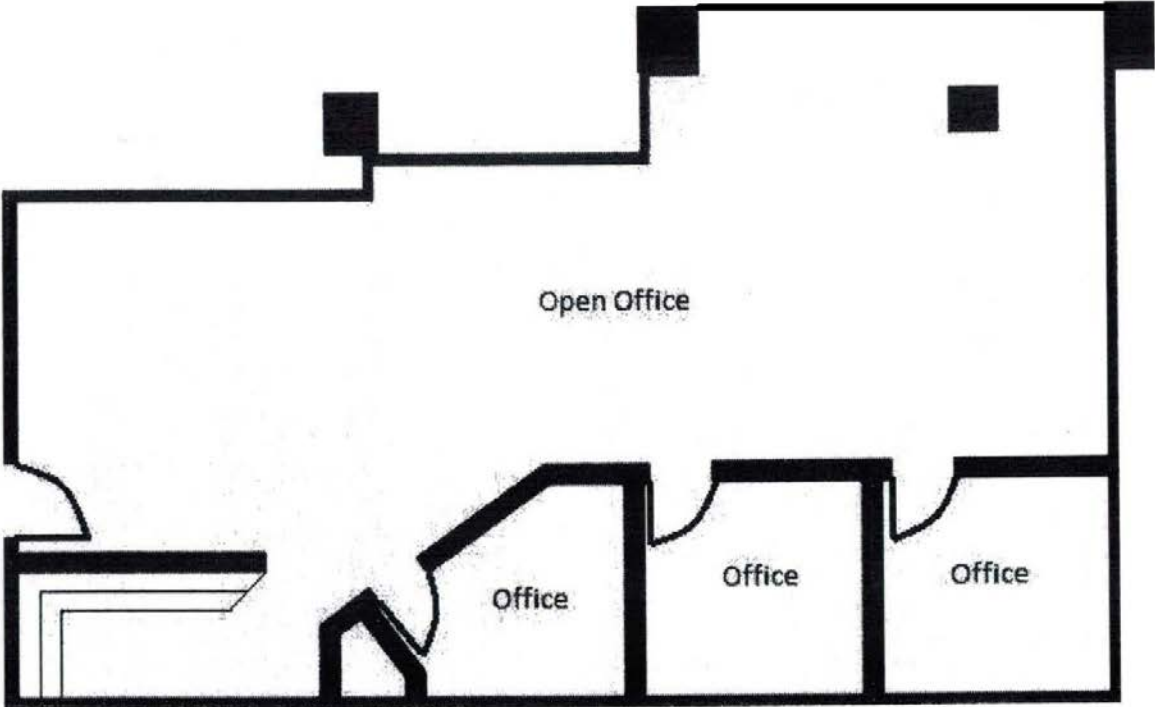
*Not to scale



Lee & Associates® - LA North/Ventura, Inc. • Corporate ID #01191898
A Member of the Lee & Associates® Group of Companies
5707 Corsa Ave, Suite 200, Westlake Village, CA 91362
P:818.223.4388 F:818.591.1450

Office Space Available For Lease | 20700 Ventura Blvd | Woodland Hills

Floorplan: Suite 225 - 1,717 RSF



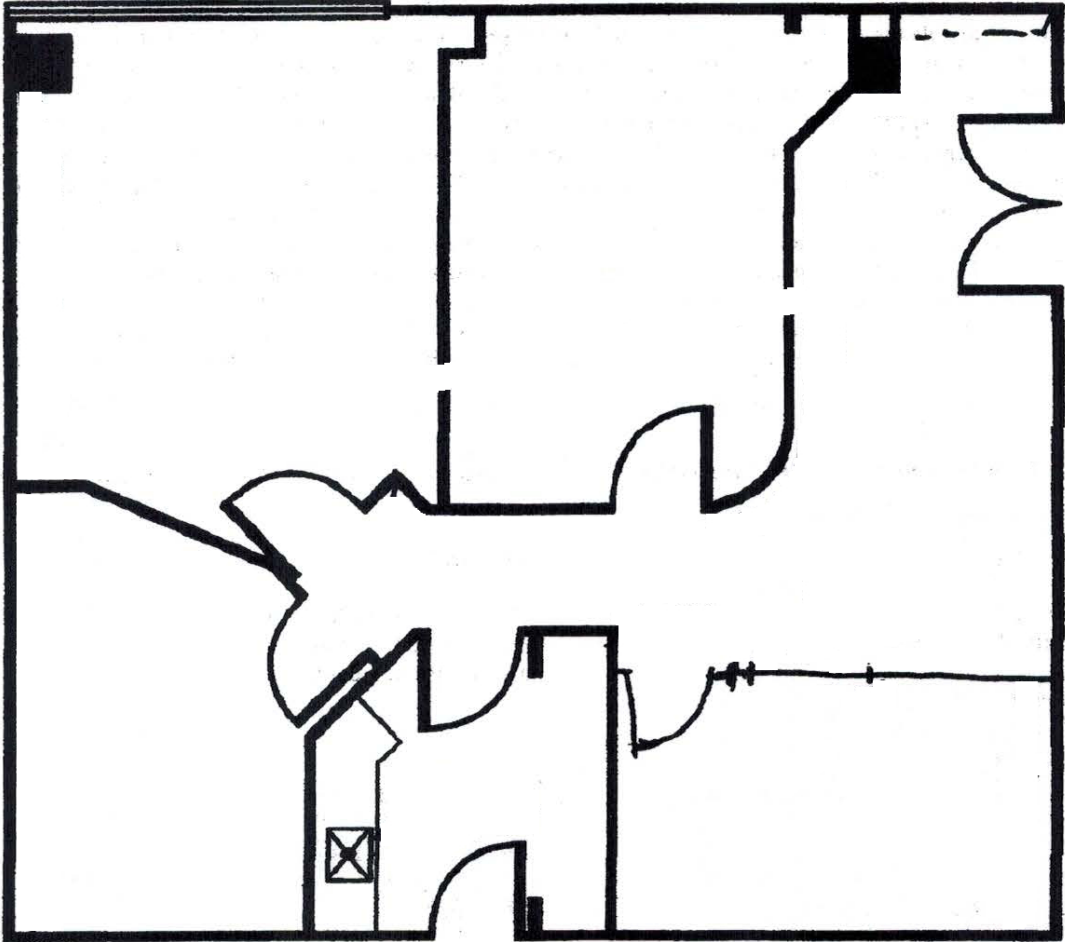
*Not to scale



Lee & Associates® - LA North/Ventura, Inc. • Corporate ID #01191898
A Member of the Lee & Associates® Group of Companies
5707 Corsa Ave, Suite 200, Westlake Village, CA 91362
P:818.223.4388 F:818.591.1450

Office Space Available For Lease | 20700 Ventura Blvd | Woodland Hills

Floorplan: Suite 229 - 1,219 RSF



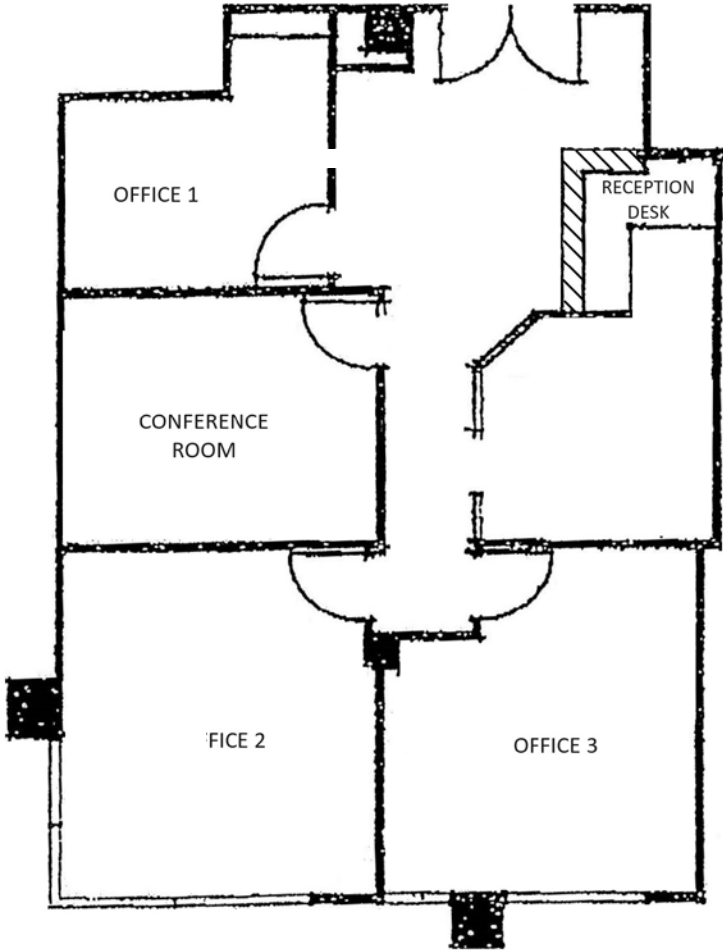
*Not to scale



Lee & Associates® - LA North/Ventura, Inc. • Corporate ID #01191898
A Member of the Lee & Associates® Group of Companies
5707 Corsa Ave, Suite 200, Westlake Village, CA 91362
P:818.223.4388 F:818.591.1450

Office Space Available For Lease | 20700 Ventura Blvd | Woodland Hills

Floorplan: Suite 231 - 1,349 RSF



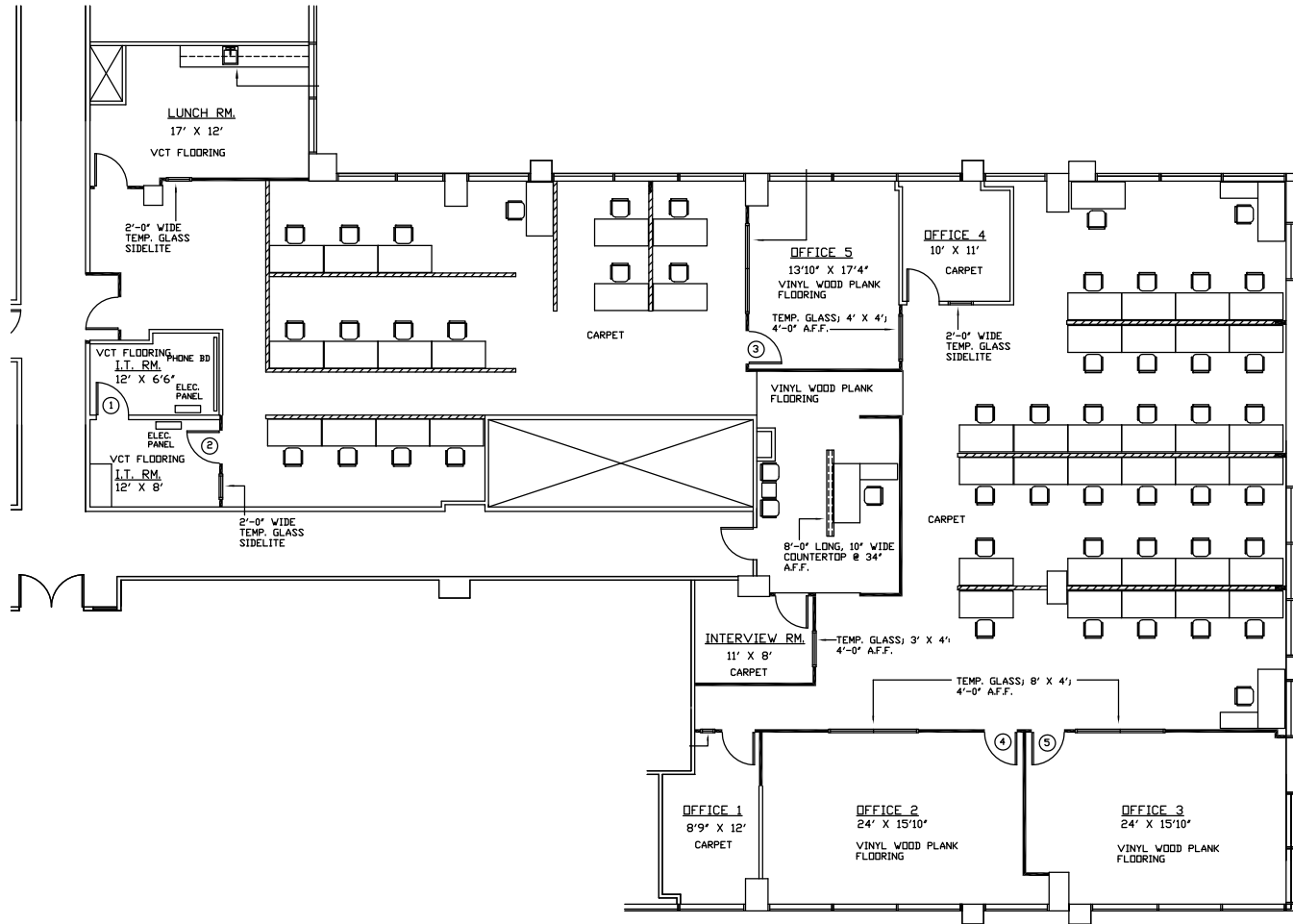
*Not to scale



Lee & Associates® - LA North/Ventura, Inc. • Corporate ID #01191898
A Member of the Lee & Associates® Group of Companies
5707 Corsa Ave, Suite 200, Westlake Village, CA 91362
P:818.223.4388 F:818.591.1450

Office Space Available For Lease | 20700 Ventura Blvd | Woodland Hills

Floorplan: Suite 300 - 6,627 RSF



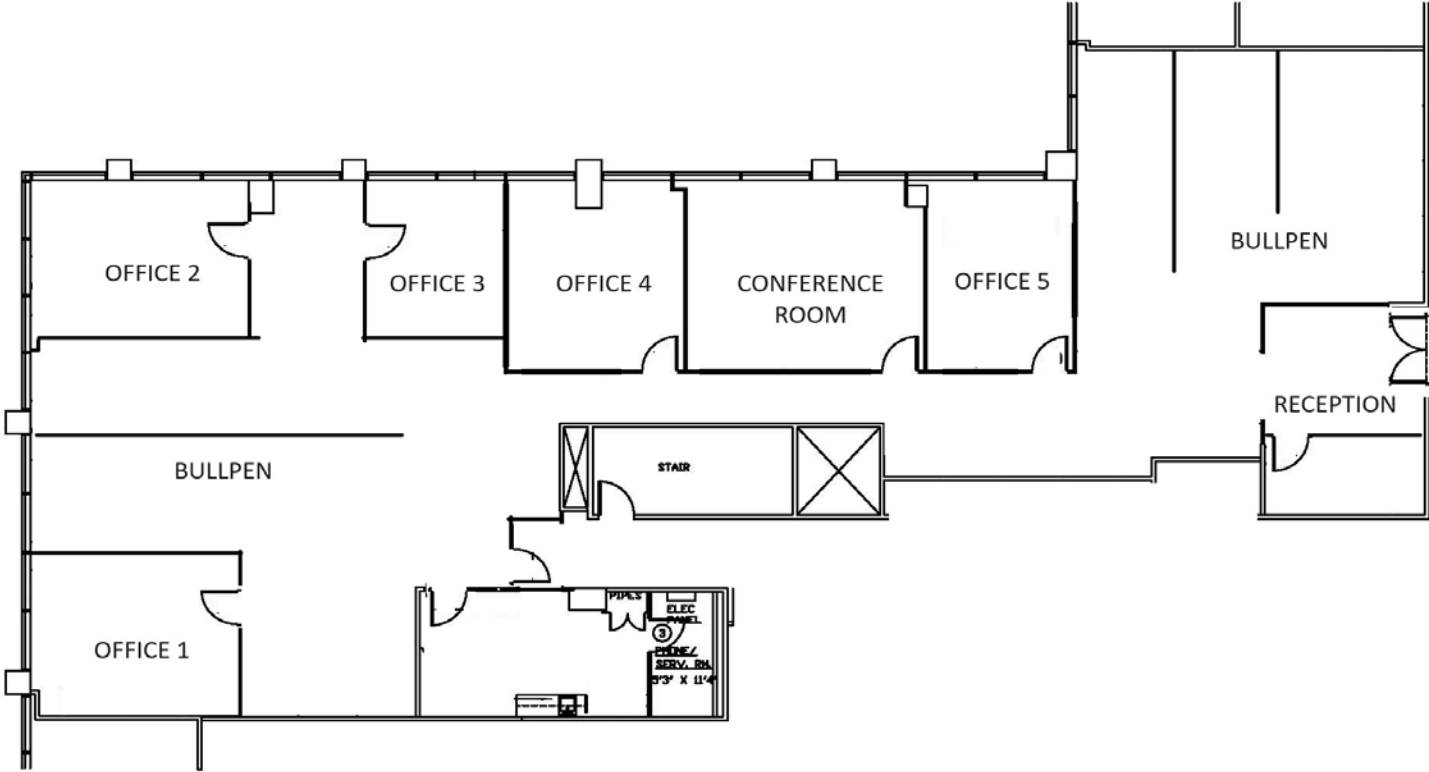
*Not to scale



Lee & Associates® - LA North/Ventura, Inc. • Corporate ID #01191898
A Member of the Lee & Associates® Group of Companies
5707 Corsa Ave, Suite 200, Westlake Village, CA 91362
P:818.223.4388 F:818.591.1450

Office Space Available For Lease | 20700 Ventura Blvd | Woodland Hills

Floorplan: Suite 302 - 5,488 RSF



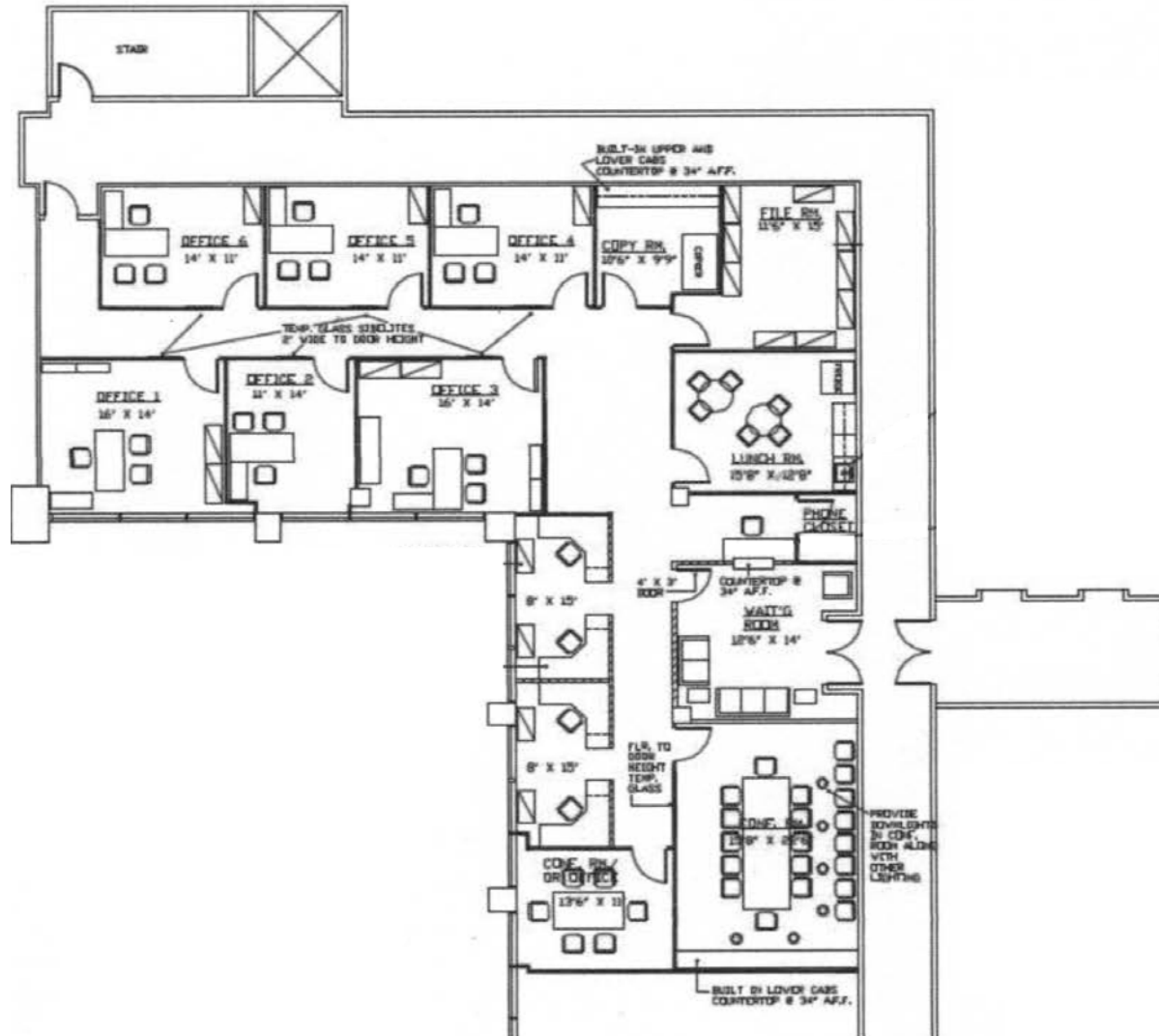
*Not to scale



Lee & Associates® - LA North/Ventura, Inc. • Corporate ID #01191898
A Member of the Lee & Associates® Group of Companies
5707 Corsa Ave, Suite 200, Westlake Village, CA 91362
P:818.223.4388 F:818.591.1450

Office Space Available For Lease | 20700 Ventura Blvd | Woodland Hills

Floorplan: Suite 320 - 4,050 RSF



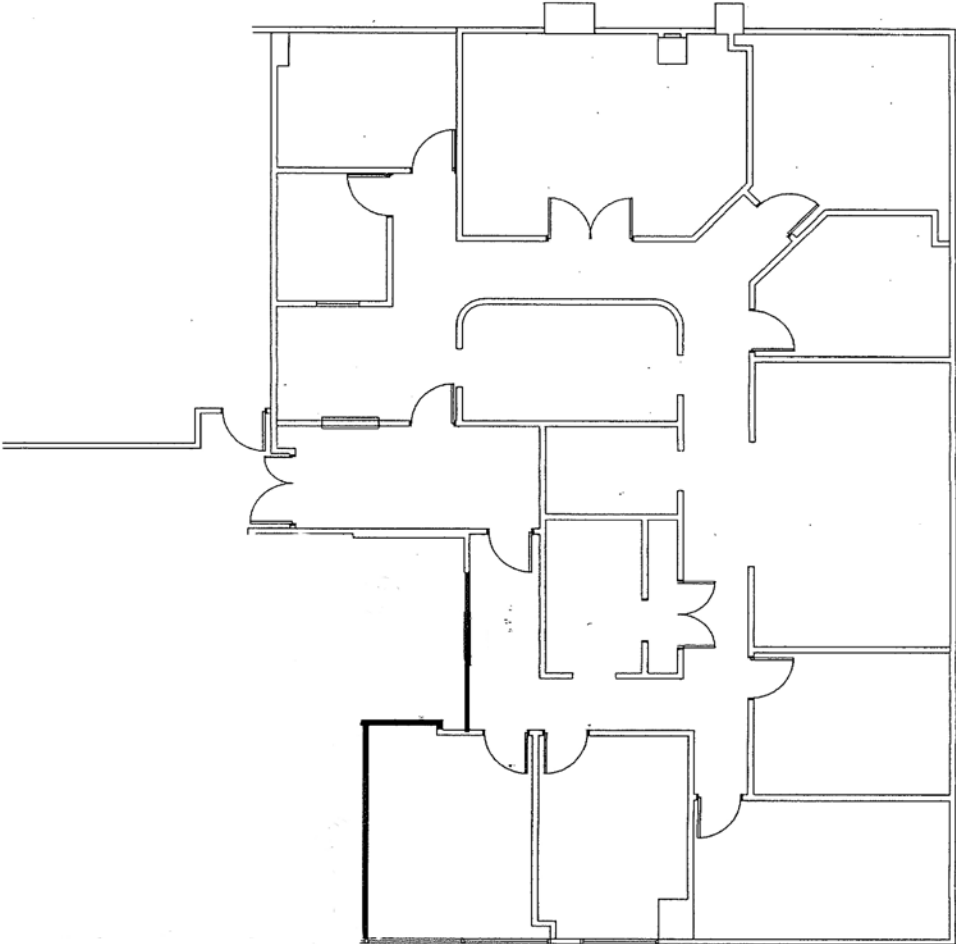
*Not to scale



Lee & Associates® - LA North/Ventura, Inc. • Corporate ID #01191898
A Member of the Lee & Associates® Group of Companies
5707 Corsa Ave, Suite 200, Westlake Village, CA 91362
P:818.223.4388 F:818.591.1450

Office Space Available For Lease | 20700 Ventura Blvd | Woodland Hills

Floorplan: Suite 327 - 3,488 RSF



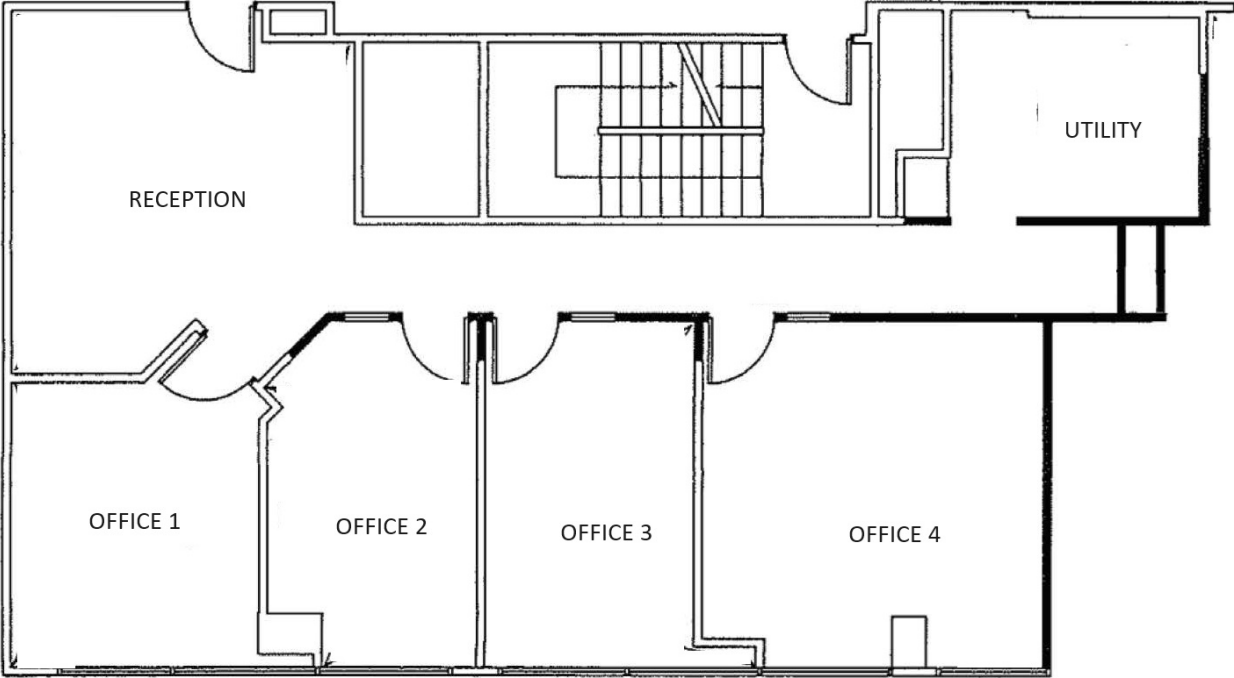
*Not to scale



Lee & Associates® - LA North/Ventura, Inc. • Corporate ID #01191898
A Member of the Lee & Associates® Group of Companies
5707 Corsa Ave, Suite 200, Westlake Village, CA 91362
P:818.223.4388 F:818.591.1450

Office Space Available For Lease | 20700 Ventura Blvd | Woodland Hills

Floorplan: Suite 328 - 1,515 RSF



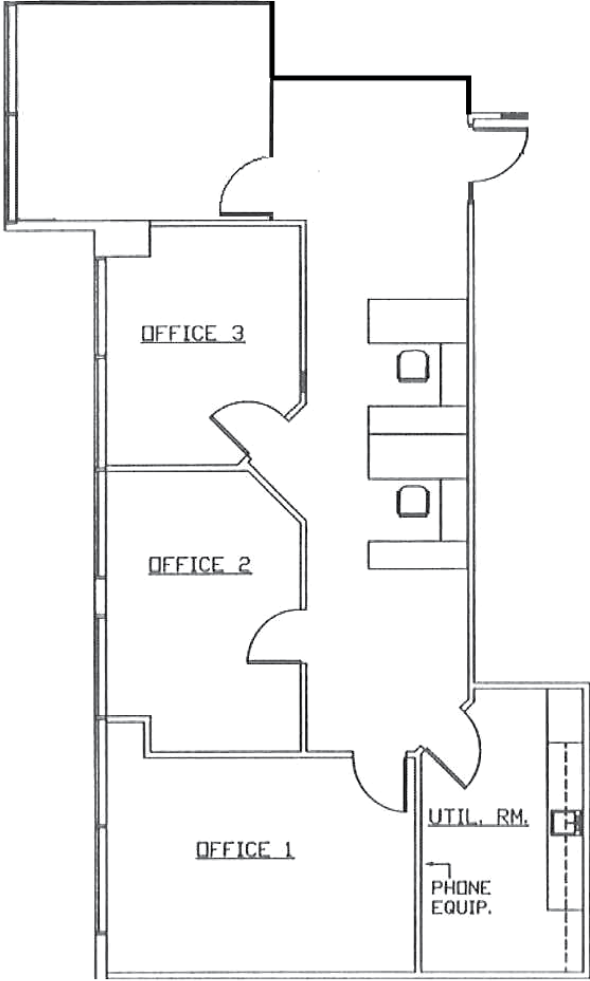
*Not to scale



Lee & Associates® - LA North/Ventura, Inc. • Corporate ID #01191898
A Member of the Lee & Associates® Group of Companies
5707 Corsa Ave, Suite 200, Westlake Village, CA 91362
P:818.223.4388 F:818.591.1450

Office Space Available For Lease | 20700 Ventura Blvd | Woodland Hills

Floorplan: Suite 350 - 1,529 RSF



*Not to scale



Lee & Associates® - LA North/Ventura, Inc. • Corporate ID #01191898
A Member of the Lee & Associates® Group of Companies
5707 Corsa Ave, Suite 200, Westlake Village, CA 91362
P:818.223.4388 F:818.591.1450

Office Space Available For Lease | 20700 Ventura Blvd | Woodland Hills



Lee & Associates® - LA North/Ventura, Inc. • Corporate ID #01191898
 A Member of the Lee & Associates® Group of Companies
 5707 Corsa Ave, Suite 200, Westlake Village, CA 91362
 P:818.223.4388 F:818.591.1450